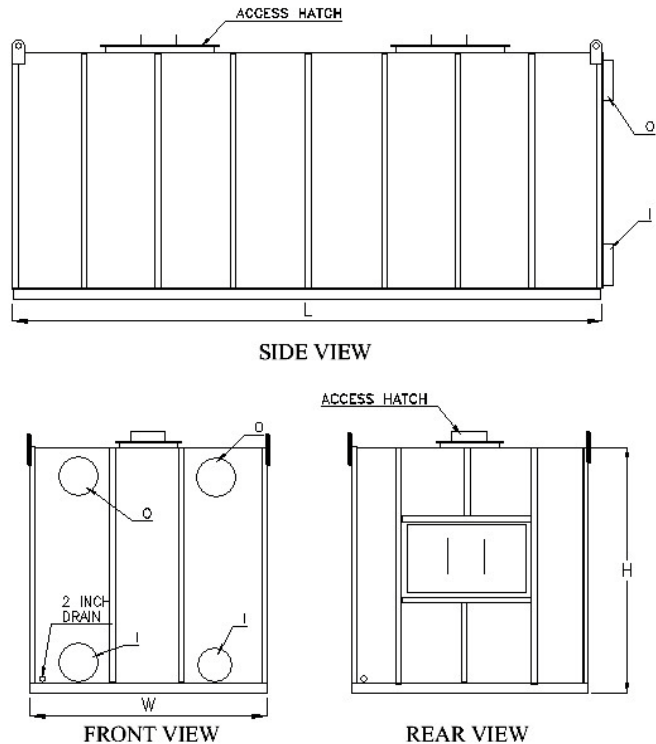




## **GC TB-SERIES**

large vapor phase adsorbers

General Carbon's **TB-Series Adsorbers** are engineered for high airflows using large amounts of carbon. These adsorbers are fabricated from mild steel and come in four sizes. Each vessel is coated inside and out with 2-part epoxy paint. A three foot bed depth gives good contact time and a large amount of carbon for a long service period. The **TB-Series** are designed for temporary or permanent placement where the carbon is changed out onsite. Large access panels provide easy entry for service. Options include connections for sampling, drains, instrumentation, fan and ductwork packages. These units are available for lease or purchase. Complete design, mobilization / demobilization, spent carbon change-out and reactivation services are available.



Unit	L	W	H	Lbs C	Air Min. <sup>1</sup>	Air Max. <sup>2</sup>	Std. I/O
TB-10	10 ft	8 ft	8.5 ft	7,200	2400 cfm	4,800 cfm	16 in Dia
TB-20	20 ft	8 ft	8.5 ft	14,400	4800 cfm	9,600 cfm	24 in Dia
TB-30	30 ft	8 ft	8.5 ft	21,600	7200 cfm	14,400 cfm	2x24 in Dia
TB-40	40 ft	8 ft	8.5 ft	28,800	9600 cfm	19,200 cfm	2x26 in Dia

<sup>1</sup>Minimum flow rated @ 30fpm/sf.    <sup>2</sup>Maximum flow rated at 60fpm, may be exceeded with caution.

Please call us at 973-523-2223 to find out how we can help with your equipment needs.