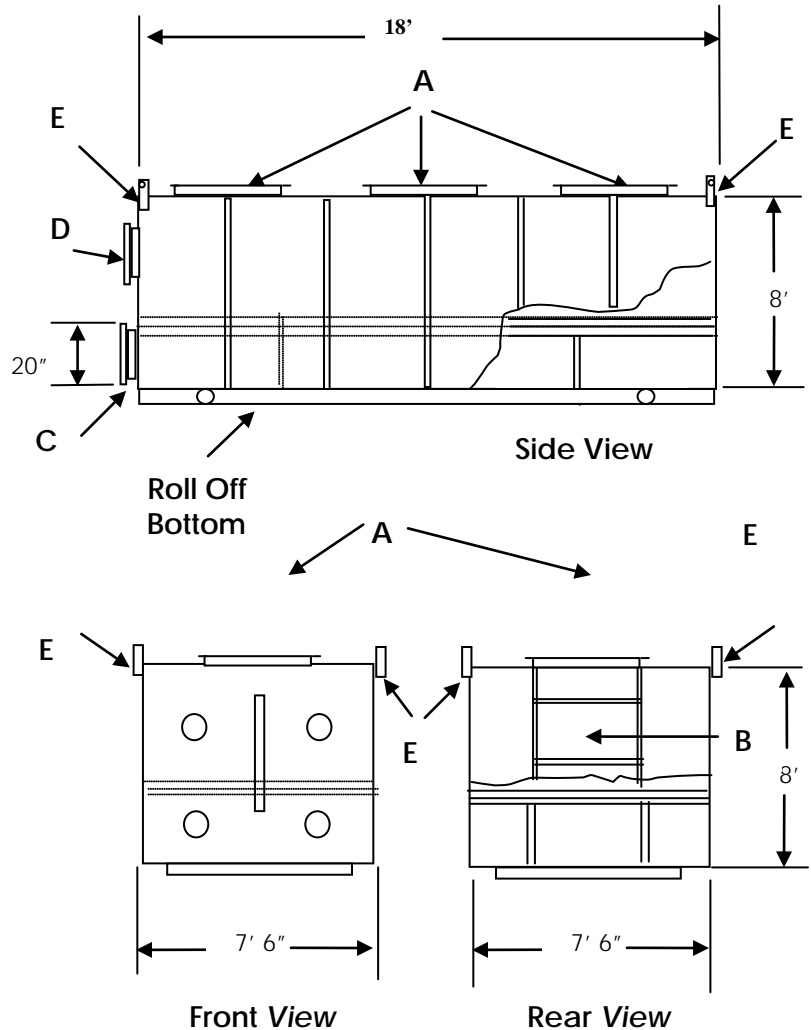




# GC ROLL-OFF ADSORBER

vapor phase carbon adsorber

General Carbon's **Roll-Off Adsorber** is engineered for high airflow (up to 12,500 cfm) applications where a large carbon bed is required. Holding up to 13,000 lbs. of quality activated carbon, it is internally coated with two-part epoxy paint. Our Roll-Off Adsorber is designed for easy transportation and maintenance. A clean-out door and three manways are provided for convenient carbon bed access. These units are available for lease or purchase. Complete spent carbon change-out and reactivation services are also available.



## Specifications

Dimensions, (ft):	18' L X 7' 6" W X 8' H
Carbon Weight, (lbs):	13,000
Max. Flow Rate, (cfm):	12,500
<b>A</b> - Manways (3), (ft):	2' X 3'
<b>B</b> - Clean-Out Door, (ft):	2' X 3'
<b>C</b> - Inlet, (inches):	14"
<b>D</b> - Outlet, (inches):	14"
<b>E</b> - Lifting Lugs:	4